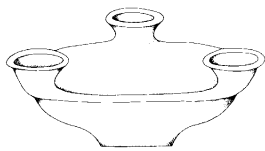


kernos



Instructions for the authors

Manuscript submission

Manuscripts for submission have to be sent par e-mail (Word and PDF files) to kernos@uliege.be. A printed version by postal mail is unnecessary. All manuscripts are peer-reviewed. The editorial norms below are not mandatory at the submission stage, except the use of a UNICODE font. Once the submitted manuscript is accepted, the norms must be applied to the final version.

Manuscript preparation (once accepted)

Manuscripts must be typeset in a 12-point UNICODE font. Bold fonts should be avoided (use italics not underscoring to signal italics). Additional space should not be inserted routinely between paragraphs or between notes; use subheads when necessary to signal a division between sections of the text. Notes should be typeset as footnotes (after punctuation in English). Bibliography and captions should be placed at the very end. Illustrations will be sent as separate files (with copyright). The rules of typography in use in the language of the article will be applied. An abstract of 1000 signs maximum will be provided.

Citation practice in brief

No references in the text itself: only in footnotes. In the footnotes, proper names are in lower-case for ancient authors, in small caps for modern ones. Arabic numerals are to be used for part and section numbers. This is true for journal volume numbers, for volume numbers and other subdivisions in a series. It is also the case for the subdivisions of classical texts. Roman numerals are to be used for volume numbers in a multivolume work, be it ancient or modern.

Primary sources

- Author, *Title* III, 2, 8 or Author, *Title* 3.2.8 (depending on the uses in your field)
- Author, fr. 2 (Editor) or Editor

The first occurrence of a reference is given in full. Then it can be abbreviated (LSJ or *OCD*).

Regarding the epigraphic evidence, collections are mentioned in italics by the more common abbreviations: *CIL*, *IG*, *Syll.*³, *OGIS*, *ILS*, *SEG*...

- Examples: *CIL* XIII 8553; *ILS* II 5318; *IG* XII 3, 328, l. 20; *IG* II 2, 1792; *IG* II² 452; *SEG* 40, 835

Secondary works in the final bibliography

- V. PIRENNE-DELFORGE, G. PIRONTI, *The Hera of Zeus: Intimate Enemy, Ultimate Spouse*, Cambridge, 2022 [French original, 2016].
- E. ASTON, *Mixanthropoi: Animal-human Hybrid Deities in Greek Religion*, Liège, 2011 (*Kernos*, suppl. 25).
- C. SOURVINO-U-WOOD, "Persephone and Aphrodite at Locri: a Model for Personality Definitions in Greek Religion", *JHS* 98 (1978), p. 101-121 [republished in SOURVINO-U-WOOD (1991), p. 147-188].
- R. PARKER, "The Cult of Aphrodite Pandamos and Pontia at Cos", in H.F.J. HORSTMANSHOFF, H.W. SINGOR, F.T. VAN STRATEN, J.H.M. STRUBBE (eds.), *Kykeon. Studies in Honour of H.S. Versnel*, Leiden, 2002 (*Religions of the Graeco-Roman World*, 142), p. 143-160.

For journal titles, abbreviations from *L'Année philologique* will be used.

Secondary works in the footnotes

- SOURVINOU-INWOOD (1991), p. 5-8; PARKER (2002), p. 144; PIRENNE-DELFORGE – PIRONTI (2022).

When a manuscript is accepted

- Only one set of proofs is sent to the authors; author's corrections are to be avoided.
- The author receives a PDF file of his or her contribution and a print copy of the journal.
- The author agrees to make his or her article available online (open access) via *OpenEdition Journals*.